

4 WAY 60x60 CASSETTE PACi STANDARD AND ELITE INVERTER+

Small and powerful, ideal for offices and restaurants. Only for Twin, Triple and Double-twin combinations.

Technical focus

- Fresh air knock out
- Multidirectional air flow
- Integrated drain pump gives 850 mm lift
- 3 speed centrifugal fan
- DC FAN for better efficiency and control
- Easy connection and control of external fan or ERV using the connector PAW-FDC on the indoor unit PCB. The external device can be control by the remote control of the Panasonic indoor unit

Standard

| | | | 3,6 kW | 4,5 kW | 5,0 kW |
|------------------------------------|---------------------------|-------------------|---------------------------------|---------------------------------|---------------------------------|
| Indoor | | | S-36PY2E5A ¹⁾ * | S-45PY2E5A ¹⁾ * | S-50PY2E5A* |
| Panel | | | CZ-KPY3A / CZ-KPY3B | CZ-KPY3A / CZ-KPY3B | CZ-KPY3A / CZ-KPY3B |
| Cooling capacity | Nominal | kW | 3,6 | 4,5 | 5,0 |
| Heating capacity | Nominal | kW | 4,2 | 5,2 | 5,6 |
| Air volume | Cool/Heat | m ³ /h | 582 / 594 | 600 / 618 | 666 / 666 |
| Moisture removal volume | | l/h | 2,1 | 2,5 | 2,8 |
| Sound pressure level ^{d)} | Cooling (Hi / Med / Lo) | dB(A) | 36 / 32 / 26 | 38 / 34 / 28 | 40 / 37 / 33 |
| | Heating (Hi / Med / Lo) | dB(A) | 36 / 32 / 26 | 38 / 34 / 28 | 40 / 37 / 33 |
| Sound power level | Cooling (Hi) | dB | 51 / 47 / 41 | 53 / 49 / 43 | 55 / 52 / 48 |
| | Heating (Hi) | dB | 51 / 47 / 41 | 53 / 49 / 43 | 55 / 52 / 48 |
| Dimensions (H x W x D) | Indoor | mm | 288 x 583 x 583 | 288 x 583 x 583 | 288 x 583 x 583 |
| | Panel CZ-KPY3A / CZ-KPY3B | mm | 31 x 700 x 700 / 31 x 625 x 625 | 31 x 700 x 700 / 31 x 625 x 625 | 31 x 700 x 700 / 31 x 625 x 625 |
| Net weight | Indoor (Panel) | kg | 18 (2,4) | 18 (2,4) | 18 (2,4) |

Rating Conditions: Cooling Indoor 27°C DB / 19°C WB. Cooling Outdoor 35°C DB / 24°C WB. Heating Indoor 20°C DB. Heating Outdoor 7°C DB / 6°C WB. (DB: Dry Bulb; WB: Wet Bulb). // Specifications subject to change without notice.

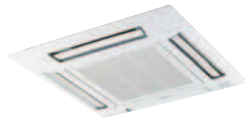
1) Only for multi combinations.
Recommended fuse for the indoor 3A.

Elite

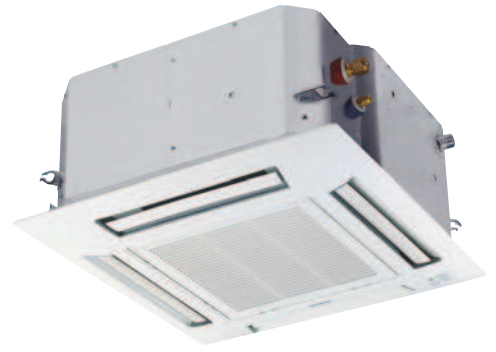


INTERNET CONTROL: Optional.

HIGH HEATING CAPACITY AT -7°C



Panel
CZ-KPY3A (size 700 x 700mm)
CZ-KPY3B (size 625 x 625mm)



Optional Controller
Wired remote controller
CZ-RTC5



Optional Controller
Timer remote controller
CZ-RTC4



Optional Controller
Wireless remote controller
CZ-RWSK2



Optional Controller
Simplified remote controller
CZ-RE2C2

Compatible with all Panasonic connectivity solutions. For detailed information go to the Control Systems section.

Elite

| | | | |
|---|---------------------------|-------------------|---------------------------------|
| KIT | | | 5,0 kW |
| Indoor | | | KIT-50PY2E5A |
| Outdoor | | | S-50PY2E5A |
| Panel | | | U-50PE1E5 |
| Timer remote controller | | | CZ-KPY3A / CZ-KPY3B |
| Cooling capacity | Nominal (Min - Max) | kW | 5,0 (1,5 - 5,6) |
| EER¹⁾ | Nominal (Min - Max) | W/W | 3,04 (5,77 - 2,29) |
| SEER²⁾ | | W/W | 5,90 A |
| Pdesign | | kW | 5,0 |
| Power input cooling | Nominal (Min - Max) | kW | 1,64 (0,260 - 2,45) |
| Annual energy consumption (ErP)³⁾ | | kWh/a | 297 |
| Heating capacity | Nominal (Min - Max) | kW | 5,6 (1,5 - 6,3) |
| Heating capacity at -7°C⁴⁾ | Nominal | kW | 4,20 |
| Heating capacity at -15°C⁴⁾ | Nominal | kW | 3,58 |
| COP¹⁾ | Nominal (Min - Max) | W/W | 3,12 (6,82 - 2,45) |
| SCOP⁵⁾ | | W/W | 3,80 A |
| Pdesign at -10°C | | kW | 4,0 |
| Power input heating | Nominal (Min - Max) | kW | 1,79 (0,22 - 2,57) |
| Annual energy consumption (ErP)³⁾ | | kWh/a | 1.474 |
| Indoor unit | | | |
| Air volume | Cooling / Heating | m ³ /h | 666 / 666 |
| Moisture removal volume | | l/h | 2,8 |
| Sound pressure level⁶⁾ | Cooling (Hi / Me / Lo) | dB(A) | 40 / 37 / 33 |
| | Heating (Hi / Me / Lo) | dB(A) | 40 / 37 / 33 |
| Sound power level | Cooling (Hi) | dB | 55 / 52 / 48 |
| | Heating (Hi) | dB | 55 / 52 / 48 |
| Dimensions (H x W x D) | Indoor | mm | 288 x 583 x 583 |
| | Panel CZ-KPY3A / CZ-KPY3B | mm | 31 x 700 x 700 / 31 x 625 x 625 |
| Net weight | Indoor (Panel) | kg | 18 (2,4) |
| Outdoor unit | | | |
| Power source | | V | 220 - 240 |
| Recommended fuse | | A | 16 |
| Connection | | mm ² | 2,5 |
| Current | Cooling / Heating | A | 7,5 / 8,2 |
| Air volume | Cooling / Heating | m ³ /h | 1.800 / 2.100 |
| Sound pressure level | Cooling / Heating (Hi) | dB(A) | 46 / 50 |
| Sound power level | Cooling / Heating (Hi) | dB | 65 / 69 |
| Dimensions | H x W x D | mm | 569 x 790 x 285 |
| Net weight | | kg | 42 |
| Piping connections | Liquid pipe / Gas pipe | Inch (mm) | 1/4 (6,35) / 1/2 (12,7) |
| Refrigerant Loading | R410A | kg | 1,65 |
| Piping length range / Elevation difference (in/out)⁷⁾ | | m | 5 - 40 / 30 |
| Pipe length for additional gas / Additional gas amount | | m / g/m | 30 / 20 |
| Operating range | Cooling Min / Max | °C | -15 / +46 |
| | Heating Min / Max | °C | -20 / +24 |

Rating Conditions: Cooling Indoor 27°C DB / 19°C WB. Cooling Outdoor 35°C DB / 24°C WB. Heating Indoor 20°C DB. Heating Outdoor 7°C DB / 6°C WB. (DB: Dry Bulb; WB: Wet Bulb). // Specifications subject to change without notice.

1) EER and COP, Energy Saving Classification, is at 220 / 240 V (380 / 415 V) only in accordance with EU directive 2002/31/EC. 2) SEER is calculated in base Eurovent IPLV for SBEM for U1 indoor unit SEER=a(EER25)+b(EER50)+c(EER75)+d(EER100) where EER25, EER50, EER75 and EER100 are the EER measured value at 25%, 50%, 75% and 100% part load for temperatures 20, 25, 30 and 35°C DB, respectively. a, b, c and d are values assigned for an office type. These values are given as a=0,2, b=0,36, c=0,32 and d=0,03. The internal temperatures are taken at 27°C DB and 19°C WB. 3) The annual consumption (ErP) is calculated by formula determined by ErP regulation. 4) Heating capacity is calculated including defrost factor correction. 5) SCOP is calculated in base Eurovent IPLV for SBEM with U1 indoor unit including defrost correction factor. 6) The Sound pressure level of the units shows the value measured of a position 1 meter in front of the main body and 1,5 m from the ground. The sound pressure is measured in accordance with Eurovent 6/C/006-97 specification. 7) When installing the outdoor unit at a higher position than the indoor unit. // Recommended fuse for the indoor 3A. // For detailed information about ErP, please visit our websites www.aircon.panasonic.eu or www.ptc.panasonic.eu

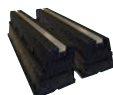
Accessories



PAN-WTRAY
Outdoor elevation platform 400 x 900 x 400 mm.



PAN-WTRAY
Tray for condenser water compatible with base ground support



PAN-GRDSE20
Outdoor base ground support for noise and vibration absorption (600 x 95 x 130 mm, 500 kg)



PAN-WPH7: Wind protection shield for U-50PE1E5.
PAN-WPH8: Wind protection shield for U-200PE1E8, U-250PE1E8.
PAN-WPH9: Wind protection shield for U-60PE1E5, U-71PE1E5/R, U-100PE1E5/R, U-125PE1E5/R.
PAN-WPH10: Wind protection shield for U-100PE1E5/R, U-125PE1E5/R, U-140PE1E5/R, U-140PE1E5/R.



PAN-PACR3
Interfaces to run 3 units on Backup and alternative run.



U-50PE1E5

4 WAY 90x90 CASSETTE
PACi STANDARD AND ELITE
INVERTER+

The 4 Way 90x90 Cassette incorporates many new benefits thanks to advances in design and technology.

Technical focus

- Circle Flow Flap for more even temperature distribution
- Higher efficiency split fin
- Highly efficient and silent turbo fan
- Individual flap control for flexible air flow direction
- Easy to clean suction grill & flap
- Special adjustment for high ceiling application
- DC FAN for better efficiency and control
- Easy connection and control of external fan or ERV using the connector PAW-FDC on the indoor unit PCB. The external device can be control by the remote control of the Panasonic indoor unit

Standard

| | | Single Phase | | | | Three Phase | | | |
|---|-------------------------|---------------|--------------------------|--------------------------|--------------------------|--------------------------|--------------------------|--------------------------|--------------------------|
| | | 6,0 kW | 7,1 kW | 10,0 kW | 12,5 kW | 10,0 kW | 12,5 kW | 14,0 kW | |
| | | KIT-60PUY1E5A | KIT-71PUY1E5A | KIT-100PUY1E5A | KIT-125PUY1E5A | KIT-100PUY1E8A | KIT-125PUY1E8A | KIT-140PUY1E8A | |
| Indoor | | S-60PU1E5A | S-71PU1E5A | S-100PU1E5A | S-125PU1E5A | S-100PU1E5A | S-125PU1E5A | S-140PU1E5A | |
| Outdoor | | U-60PEY1E5 | U-71PEY1E5 | U-100PEY1E5 | U-125PEY1E5 | U-100PEY1E8 | U-125PEY1E8 | U-140PEY1E8 | |
| Panel | | CZ-KPU21 | CZ-KPU21 | CZ-KPU21 | CZ-KPU21 | CZ-KPU21 | CZ-KPU21 | CZ-KPU21 | |
| Timer remote controller | | CZ-RTC4 | CZ-RTC4 | CZ-RTC4 | CZ-RTC4 | CZ-RTC4 | CZ-RTC4 | CZ-RTC4 | |
| Cooling capacity | Nominal (Min - Max) | kW | 6,0 (2,0 - 7,0) | 7,1 (2,0 - 7,7) | 10,0 (2,7 - 11,5) | 12,5 (3,8 - 13,5) | 10,0 (2,7 - 11,5) | 12,5 (3,8 - 13,5) | 14,0 (3,3 - 15,5) |
| EER ¹⁾ | Nominal (Min - Max) | W/W | 3,55 (6,15 - 2,80) A | 3,24 (6,15 - 2,75) A | 3,11 (5,09 - 2,74) B | 3,11 (4,22 - 2,70) B | 3,11 (5,09 - 2,74) B | 3,11 (4,22 - 2,70) B | 3,21 (3,93 - 2,58) A |
| SEER ²⁾ | Nominal (Min - Max) | W/W | 6,8 A++ | 6,3 A++ | 6,4 A++ | — | 6,2 A++ | — | — |
| Pdesign | | kW | 6,0 | 7,1 | 10 | — | 10,0 | — | — |
| Power input cooling | Nominal (Min - Max) | kW | 1,690 (0,325 - 2,500) | 2,190 (0,325 - 2,800) | 3,220 (0,530 - 4,200) | 4,020 (0,900 - 5,000) | 3,220 (0,530 - 4,200) | 4,020 (0,900 - 5,000) | 4,36 (0,84 - 6,00) |
| Annual energy consumption (ErP) ³⁾ | | kWh/a | 309 | 394 | 547 | — | 564 | — | — |
| Heating capacity | Nominal (Min - Max) | kW | 6,0 (1,8 - 7,0) | 7,1 (1,8 - 8,1) | 10,0 (2,1 - 13,8) | 12,5 (3,4 - 15,0) | 10,0 (2,1 - 13,8) | 12,5 (3,4 - 15,0) | 14,0 (4,1 - 16,0) |
| Heating capacity at -7°C ⁴⁾ | | kW | 4,99 | 5,08 | 9,97 | 10,97 | 9,97 | 13,35 | — |
| Heating capacity at -15°C ⁴⁾ | | kW | 4,20 | 4,37 | 8,43 | 9,03 | 8,43 | 9,03 | 12,38 |
| COP ⁵⁾ | Nominal (Min - Max) | W/W | 4,05 (6,55 - 3,25) A | 3,78 (6,55 - 3,23) A | 3,80 (5,12 - 3,45) A | 3,80 (4,66 - 3,41) A | 3,80 (5,12 - 3,45) A | 3,80 (4,66 - 3,41) A | 3,89 (4,56 - 3,08) A |
| SCOP ⁵⁾ | Nominal (Min - Max) | W/W | 4,0 A+ | 4,0 A+ | 4,0 A+ | — | 4,0 A+ | — | — |
| Pdesign at -10°C | | kW | 6,0 | 6,0 | 10,0 | — | 10,0 | — | — |
| Power input heating | Nominal (Min - Max) | kW | 1,480 (0,275 - 2,155) | 1,880 (0,275 - 2,510) | 2,630 (0,410 - 4,000) | 3,290 (0,730 - 4,400) | 2,630 (0,410 - 4,000) | 3,290 (0,730 - 4,400) | 3,60 (0,90 - 5,20) |
| Annual energy consumption (ErP) ³⁾ | | kWh/a | 2.100 | 2.100 | 3.500 | — | 3.500 | — | — |
| Indoor unit | | | | | | | | | |
| Air volume | Cooling (Hi / Med / Lo) | m³/h | 1.260 / 1.020 / 840 | 1.320 / 1.020 / 840 | 1.980 / 1.620 / 1.260 | 2.100 / 1.680 / 1.320 | 1.980 / 1.620 / 1.260 | 2.100 / 1.680 / 1.320 | 2.160 / 1.740 / 1.380 |
| | Heating (Hi / Med / Lo) | m³/h | 1.260 / 1.020 / 840 | 1.320 / 1.020 / 840 | 1.980 / 1.620 / 1.260 | 2.100 / 1.680 / 1.320 | 1.980 / 1.620 / 1.260 | 2.100 / 1.680 / 1.320 | 2.160 / 1.740 / 1.380 |
| Moisture removal volume | | l/h | 3,4 | 4,2 | 6,0 | 7,9 | 6,0 | 7,9 | 9,0 |
| Sound pressure level ⁶⁾ | Cooling (Hi / Med / Lo) | dB(A) | 36 / 31 / 28 | 37 / 31 / 28 | 44 / 38 / 32 | 45 / 39 / 33 | 44 / 38 / 32 | 45 / 39 / 33 | 46 / 40 / 34 |
| | Heating (Hi / Med / Lo) | dB(A) | 36 / 31 / 28 | 37 / 31 / 28 | 44 / 38 / 32 | 45 / 39 / 33 | 44 / 38 / 32 | 45 / 39 / 33 | 46 / 40 / 34 |
| Sound power level | Cooling (Hi / Med / Lo) | dB | 53 / 48 / 45 | 54 / 48 / 45 | 62 / 55 / 49 | 63 / 56 / 50 | 62 / 55 / 49 | 63 / 56 / 50 | 64 / 57 / 51 |
| | Heating (Hi / Med / Lo) | dB | 53 / 48 / 45 | 54 / 48 / 45 | 62 / 55 / 49 | 63 / 56 / 50 | 62 / 55 / 49 | 63 / 56 / 50 | 64 / 57 / 51 |
| Dimensions (H x W x D) | Indoor | mm | 256 x 840 x 840 | 256 x 840 x 840 | 319 x 840 x 840 | 319 x 840 x 840 | 319 x 840 x 840 | 319 x 840 x 840 | 319 x 840 x 840 |
| | Panel | mm | 33,5 x 950 x 950 | 33,5 x 950 x 950 | 33,5 x 950 x 950 | 33,5 x 950 x 950 | 33,5 x 950 x 950 | 33,5 x 950 x 950 | 33,5 x 950 x 950 |
| Net weight | Indoor (Panel) | kg | 24 (4) | 24 (4) | 27 (4) | 27 (4) | 27 (4) | 27 (4) | 27 (4) |
| Outdoor unit | | | | | | | | | |
| Power source | | V | 220 / 230 / 240 | 220 / 230 / 240 | 220 / 230 / 240 | 220 / 230 / 240 | 380 / 400 / 415 | 380 / 400 / 415 | 380 / 400 / 415 |
| Recommended fuse | | A | 20 | 20 | 25 | 30 | 16 | 16 | 16 |
| Connection | | mm² | 2,5 | 2,5 | 4 | 6 | 2,5 | 2,5 | 2,5 |
| Current | Cooling | A | 8,30 / 7,90 / 7,60 | 10,70 / 10,30 / 9,80 | 15,10 / 14,40 / 13,80 | 19,2 / 18,4 / 17,6 | 5,10 / 4,85 / 4,70 | 6,35 / 6,05 / 5,80 | 6,85 / 6,50 / 6,25 |
| | Heating | A | 7,20 / 6,90 / 6,60 | 9,10 / 8,70 / 8,30 | 12,00 / 11,60 / 11,20 | 15,4 / 14,8 / 14,2 | 4,15 / 3,95 / 3,80 | 5,15 / 4,90 / 4,70 | 5,65 / 5,35 / 5,20 |
| Air volume | Cooling / Heating | m³/h | 1.800 / 2.100 | 2.070 / 2.100 | 4.560 / 4.020 | 4.800 / 4.380 | 4.800 / 4.380 | 4.800 / 4.380 | 8.100 / 7.200 |
| Sound pressure level | Cooling / Heating (Hi) | dB(A) | 46 / 50 | 50 / 52 | 54 / 54 | 56 / 56 | 54 / 54 | 56 / 56 | 54 / 53 |
| Sound power level | Cooling / Heating (Hi) | dB | 65 / 69 | 70 / 70 | 70 / 70 | 73 / 73 | 70 / 70 | 73 / 73 | 71 / 70 |
| Dimensions | H x W x D | mm | 569 x 790 x 285 | 569 x 790 x 285 | 996 x 940 x 340 | 996 x 940 x 340 | 996 x 940 x 340 | 996 x 940 x 340 | 1.416 x 940 x 340 |
| Net weight | | kg | 42 | 42 | 73 | 85 | 73 | 85 | 98 |
| Piping connections | Liquid pipe / Gas pipe | Inch (mm) | 3/8 (9,52) / 5/8 (15,88) | 3/8 (9,52) / 5/8 (15,88) | 3/8 (9,52) / 5/8 (15,88) | 3/8 (9,52) / 5/8 (15,88) | 3/8 (9,52) / 5/8 (15,88) | 3/8 (9,52) / 5/8 (15,88) | 3/8 (9,52) / 5/8 (15,88) |
| Refrigerant loading | R410A | kg | 1,7 | 1,7 | 2,60 | 3,20 | 2,60 | 3,20 | 3,4 |
| Piping length range / Elevation difference (in/out) ⁷⁾ | | m | 5 - 50 / 30 | 5 - 50 / 30 | 5 - 50 / 30 | 5 - 50 / 30 | 5 - 50 / 30 | 5 - 50 / 30 | 5 - 50 / 30 |
| Pipe length for additional gas / Additional gas amount | | m / g/m | 20 / 40 | 20 / 40 | 30 / 50 | 30 / 50 | 30 / 50 | 30 / 50 | 30 / 50 |
| Operating range | Cooling Min / Max | °C | -10 / +43 | -10 / +43 | -10 / +43 | -10 / +43 | -10 / +43 | -10 / +43 | -10 / +43 |
| | Heating Min / Max | °C | -15 / +24 | -15 / +24 | -15 / +24 | -15 / +24 | -15 / +24 | -15 / +24 | -15 / +24 |

Rating Conditions: Cooling Indoor 27°C DB / 19°C WB. Cooling Outdoor 35°C DB / 24°C WB. Heating Indoor 20°C DB. Heating Outdoor 7°C DB / 4°C WB. (DB: Dry Bulb; WB: Wet Bulb). // Specifications subject to change without notice.
 1) EER and COP, Energy Saving Classification, is at 220 / 240 V (380 / 415 V) only in accordance with EU directive 2002/31/EC. 2) SEER is calculated in base Eurovent IPLV for SBEM for U1 indoor unit SEER=a[EER25]+b[EER50]+c[EER75]+d[EER100] where EER25, EER50, EER75 and EER100 are the EER measured value at 25%, 50%, 75% and 100% part load for temperatures 20, 25, 30 and 35°C DB, respectively. a, b, c and d are values assigned for an office type. These values are given as a=0,2, b=0,36, c=0,32 and d=0,03. The internal temperatures are taken at 27°C DB and 19°C WB. 3) The annual consumption(ErP) is calculated by formula determined by ErP regulation. 4) Heating capacity is calculated including defrost factor correction. 5) SCOP is calculated in base Eurovent IPLV for SBEM with U1

Standard

Elite

| | | | | | | | | | | | | | |
|-------------------------|------------------------|------------------------------|------------------------------|-------------------------|------------------------|------------------------------|------------------------------|------------------|---------------|---|-------------------------|----------------------------|---------------------------------------|
| A++ 6,80 SEER | A+ 4,80 SCOP | -10°C COOLING MODE | -15°C HEATING MODE | A++ 7,40 SEER | A+ 4,10 SCOP | -15°C COOLING MODE | -20°C HEATING MODE | INVERTER+ | DC FAN | R22 RENEWAL R22 RENEWAL R410A | INTERNET CONTROL | BMS CONNECTIVITY | 5 YEARS COMPRESSOR WARRANTY |
|-------------------------|------------------------|------------------------------|------------------------------|-------------------------|------------------------|------------------------------|------------------------------|------------------|---------------|---|-------------------------|----------------------------|---------------------------------------|

SEER and SCOP: For KIT-60PUY1E5A.

SEER and SCOP: For KIT-60PUY1E5A and KIT-71PUY1E5A.

INTERNET CONTROL: Optional.

HIGH HEATING CAPACITY AT -7°C



Panel CZ-KPU21



360°
air flow



Optional Controller
Wired remote controller
CZ-RTC5



Optional Controller
Timer remote controller
CZ-RTC4



Optional Controller
Wireless remote controller
CZ-RWSU2N



Optional Controller
Simplified remote controller
CZ-RE2C2

Compatible with all Panasonic connectivity solutions. For detailed information go to the Control Systems section.

Elite

| Single Phase | | | | | Three Phase | | | | |
|-------------------------|--------------------------|--------------------------|--------------------------|--------------------------|--------------------------|--------------------------|--------------------------|--------------------------|--------------------------|
| 5,0 kW | 6,0 kW | 7,1 kW | 10,0 kW | 12,5 kW | 14,0 kW | 7,1 kW | 10,0 kW | 12,5 kW | 14,0 kW |
| KIT-50PU1E5A | KIT-60PU1E5A | KIT-71PU1E5A | KIT-100PU1E5A | KIT-125PU1E5A | KIT-140PU1E5A | KIT-71PU1E8A | KIT-100PU1E8A | KIT-125PU1E8A | KIT-140PU1E8A |
| S-50PU1E5A | S-60PU1E5A | S-71PU1E5A | S-100PU1E5A | S-125PU1E5A | S-140PU1E5A | S-71PU1E8A | S-100PU1E8A | S-125PU1E8A | S-140PU1E8A |
| U-50PE1E5 | U-60PE1E5A | U-71PE1E5A | U-100PE1E5A | U-125PE1E5A | U-140PE1E5A | U-71PE1E8A | U-100PE1E8A | U-125PE1E8A | U-140PE1E8A |
| CZ-KPU21 | CZ-KPU21 | CZ-KPU21 | CZ-KPU21 | CZ-KPU21 | CZ-KPU21 | CZ-KPU21 | CZ-KPU21 | CZ-KPU21 | CZ-KPU21 |
| CZ-RTC4 | CZ-RTC4 | CZ-RTC4 | CZ-RTC4 | CZ-RTC4 | CZ-RTC4 | CZ-RTC4 | CZ-RTC4 | CZ-RTC4 | CZ-RTC4 |
| 5,0 (1,5 - 5,6) | 6,0 (2,5 - 7,1) | 7,1 (2,5 - 8,0) | 10,0 (3,3 - 12,5) | 12,5 (3,3 - 14,0) | 14,0 (3,3 - 15,5) | 7,1 (3,2 - 8,0) | 10,0 (3,3 - 12,5) | 12,5 (3,3 - 14,0) | 14,0 (3,3 - 15,5) |
| 3,70 (5,77 - 2,80) A | 4,05 (5,56 - 3,55) A | 3,94 (5,56 - 3,02) A | 4,20 (3,93 - 3,38) A | 3,60 (3,93 - 3,04) A | 3,25 (3,93 - 2,58) A | 3,94 (5,56 - 3,02) A | 4,20 (3,93 - 3,38) A | 3,60 (3,93 - 3,04) A | 3,25 (3,93 - 2,58) A |
| 6,5 A++ | 7,4 A++ | 7,4 A++ | 6,6 A++ | — | — | 6,8 A++ | 6,5 A++ | — | — |
| 5,0 | 6,0 | 7,1 | 10,0 | — | — | 7,1 | 10,0 | — | — |
| 1,350 (0,260 - 2,000) | 1,480 (0,450 - 2,000) | 1,800 (0,450 - 2,650) | 2,380 (0,840 - 3,700) | 3,470 (0,840 - 4,600) | 4,310 (0,840 - 6,000) | 1,800 (0,560 - 2,650) | 2,380 (0,840 - 3,700) | 3,470 (0,840 - 4,600) | 4,310 (0,840 - 6,000) |
| 269 | 284 | 336 | 530 | — | — | 365 | 538 | — | — |
| 5,6 (1,5 - 6,5) | 7,0 (2,0 - 8,0) | 8,0 (2,0 - 9,0) | 11,2 (4,1 - 14,0) | 14,0 (4,1 - 16,0) | 16,0 (4,1 - 18,0) | 8,0 (2,8 - 9,0) | 11,2 (4,1 - 14,0) | 14,0 (4,1 - 16,0) | 16,0 (4,1 - 18,0) |
| 4,20 | 6,69 | 7,52 | 12,04 | 13,48 | 14,24 | 7,52 | 12,04 | 13,48 | 14,24 |
| 3,58 | 6,56 | 7,65 | 11,20 | 12,38 | 12,69 | 7,65 | 11,20 | 12,38 | 12,69 |
| 3,92 (6,82 - 2,83) A | 3,87 (5,00 - 3,23) A | 4,00 (5,00 - 3,10) A | 4,31 (4,56 - 3,18) A | 4,00 (4,56 - 3,08) A | 3,70 (4,56 - 3,05) A | 4,00 (5,60 - 3,10) A | 4,31 (4,56 - 3,18) A | 4,00 (4,56 - 3,08) A | 3,70 (4,56 - 3,05) A |
| 3,8 A | 4,1 A+ | 4,1 A+ | 4,2 A+ | — | — | 4,0 A+ | 4,2 A+ | — | — |
| 4,0 | 6,0 | 7,1 | 10,0 | — | — | 7,1 | 10,0 | — | — |
| 1,430 (0,220 - 2,300) | 1,810 (0,400 - 2,480) | 2,000 (0,400 - 2,900) | 2,600 (0,900 - 4,400) | 3,500 (0,900 - 5,200) | 4,330 (0,900 - 5,900) | 2,000 (0,500 - 2,900) | 2,600 (0,900 - 4,400) | 3,500 (0,900 - 5,200) | 4,330 (0,900 - 5,900) |
| 1.474 | 2.047 | 2.424 | 3.333 | — | — | 2.485 | 3.333 | — | — |
| 960 / 810 / 720 | 1.260 / 1.020 / 840 | 1.320 / 1.020 / 840 | 1.980 / 1.620 / 1.260 | 2.100 / 1.680 / 1.320 | 2.160 / 1.740 / 1.380 | 1.320 / 1.020 / 840 | 1.980 / 1.620 / 1.260 | 2.100 / 1.680 / 1.320 | 2.160 / 1.740 / 1.380 |
| 960 / 810 / 720 | 1.260 / 1.020 / 840 | 1.320 / 1.020 / 840 | 1.980 / 1.620 / 1.260 | 2.100 / 1.680 / 1.320 | 2.160 / 1.740 / 1.380 | 1.320 / 1.020 / 840 | 1.980 / 1.620 / 1.260 | 2.100 / 1.680 / 1.320 | 2.160 / 1.740 / 1.380 |
| 2,8 | 3,4 | 4,2 | 6,0 | 7,9 | 9,0 | 4,2 | 6,0 | 7,9 | 9,0 |
| 32 / 29 / 27 | 36 / 31 / 28 | 37 / 31 / 28 | 44 / 38 / 32 | 45 / 39 / 33 | 46 / 40 / 34 | 37 / 31 / 28 | 44 / 38 / 32 | 45 / 39 / 33 | 46 / 40 / 34 |
| 32 / 29 / 27 | 36 / 31 / 28 | 37 / 31 / 28 | 44 / 38 / 32 | 45 / 39 / 33 | 46 / 40 / 34 | 37 / 31 / 28 | 44 / 38 / 32 | 45 / 39 / 33 | 46 / 40 / 34 |
| 49 / 46 / 44 | 53 / 48 / 45 | 54 / 48 / 45 | 62 / 55 / 49 | 63 / 56 / 50 | 64 / 57 / 51 | 54 / 48 / 45 | 62 / 55 / 49 | 63 / 56 / 50 | 64 / 57 / 51 |
| 49 / 46 / 44 | 53 / 48 / 45 | 54 / 48 / 45 | 62 / 55 / 49 | 63 / 56 / 50 | 64 / 57 / 51 | 54 / 48 / 45 | 62 / 55 / 49 | 63 / 56 / 50 | 64 / 57 / 51 |
| 256 x 840 x 840 | 256 x 840 x 840 | 256 x 840 x 840 | 319 x 840 x 840 | 319 x 840 x 840 | 319 x 840 x 840 | 256 x 840 x 840 | 319 x 840 x 840 | 319 x 840 x 840 | 319 x 840 x 840 |
| 33,5 x 950 x 950 | 33,5 x 950 x 950 | 33,5 x 950 x 950 | 33,5 x 950 x 950 | 33,5 x 950 x 950 | 33,5 x 950 x 950 | 33,5 x 950 x 950 | 33,5 x 950 x 950 | 33,5 x 950 x 950 | 33,5 x 950 x 950 |
| 23 (4) | 24 (4) | 24 (4) | 27 (4) | 27 (4) | 27 (4) | 24 (4) | 27 (4) | 27 (4) | 27 (4) |
| 220 / 230 / 240 | 220 / 230 / 240 | 220 / 230 / 240 | 220 / 230 / 240 | 220 / 230 / 240 | 220 / 230 / 240 | 380 / 400 / 415 | 380 / 400 / 415 | 380 / 400 / 415 | 380 / 400 / 415 |
| 16 | 20 | 20 | 25 | 30 | 16 | 16 | 16 | 16 | 16 |
| 2,5 | 2,5 | 2,5 | 4 | 6 | 2,5 | 2,5 | 2,5 | 2,5 | 2,5 |
| 6,50 / 6,20 / 5,95 | 7,15 / 6,90 / 6,70 | 8,40 / 8,10 / 7,90 | 10,7 / 10,3 / 9,90 | 15,8 / 15,3 / 14,8 | 19,6 / 19,0 / 18,4 | 2,80 / 2,70 / 2,60 | 3,70 / 3,50 / 3,40 | 5,45 / 5,15 / 5,00 | 6,75 / 6,45 / 6,20 |
| 6,90 / 6,60 / 6,30 | 8,50 / 8,20 / 7,95 | 9,30 / 9,00 / 8,70 | 11,8 / 11,4 / 11,0 | 15,9 / 15,4 / 14,9 | 19,8 / 19,2 / 18,6 | 3,10 / 3,00 / 2,90 | 4,05 / 3,85 / 3,75 | 5,50 / 5,20 / 5,05 | 6,85 / 6,50 / 6,25 |
| 1.800 / 2.100 | 3.600 / 3.600 | 3.600 / 3.600 | 6.600 / 5.700 | 7.800 / 6.600 | 8.100 / 7.200 | 3.600 / 3.600 | 6.600 / 5.700 | 7.800 / 6.600 | 8.100 / 7.200 |
| 46 / 50 | 48 / 50 | 48 / 50 | 52 / 52 | 53 / 53 | 54 / 55 | 48 / 50 | 52 / 52 | 53 / 53 | 54 / 55 |
| 65 / 69 | 65 / 67 | 65 / 67 | 69 / 69 | 70 / 70 | 71 / 71 | 65 / 67 | 69 / 69 | 70 / 70 | 71 / 71 |
| 569 x 790 x 285 | 996 x 940 x 340 | 996 x 940 x 340 | 1.416 x 940 x 340 | 1.416 x 940 x 340 | 1.416 x 940 x 340 | 996 x 940 x 340 | 1.416 x 940 x 340 | 1.416 x 940 x 340 | 1.416 x 940 x 340 |
| 42 | 68 | 69 | 98 | 98 | 98 | 71 | 98 | 98 | 98 |
| 1/4 (6,35) / 1/2 (12,7) | 3/8 (9,52) / 5/8 (15,88) | 3/8 (9,52) / 5/8 (15,88) | 3/8 (9,52) / 5/8 (15,88) | 3/8 (9,52) / 5/8 (15,88) | 3/8 (9,52) / 5/8 (15,88) | 3/8 (9,52) / 5/8 (15,88) | 3/8 (9,52) / 5/8 (15,88) | 3/8 (9,52) / 5/8 (15,88) | 3/8 (9,52) / 5/8 (15,88) |
| 1,65 | 2 | 2,35 | 3,4 | 3,4 | 3,4 | 2,35 | 3,4 | 3,4 | 3,4 |
| 5 - 40 / 30 | 5 - 50 / 30 | 5 - 50 / 30 | 5 - 75 / 30 | 5 - 75 / 30 | 5 - 75 / 30 | 5 - 50 / 30 | 5 - 75 / 30 | 5 - 75 / 30 | 5 - 75 / 30 |
| 30 / 20 | 30 / 50 | 30 / 50 | 30 / 50 | 30 / 50 | 30 / 50 | 30 / 50 | 30 / 50 | 30 / 50 | 30 / 50 |
| -15 / +46 | -15 / +46 | -15 / +46 | -15 / +46 | -15 / +46 | -15 / +46 | -15 / +46 | -15 / +46 | -15 / +46 | -15 / +46 |
| -20 / +24 | -20 / +24 | -20 / +24 | -20 / +24 | -20 / +24 | -20 / +24 | -20 / +24 | -20 / +24 | -20 / +24 | -20 / +24 |

indoor unit including defrost correction factor. 6) The Sound pressure level of the units shows the value measured at a position 1 meter in front of the main body and 1,5 m from the ground. The sound pressure is measured in accordance with Eurovent 6/C/006-97 specification. 7) When installing the outdoor unit at a higher position than the indoor unit. // Recommended fuse for the indoor 3A. For detailed information about ErP, please visit our websites www.aircon.panasonic.eu or www.ptc.panasonic.eu

Accessories



PANH-GRDST40
Outdoor elevation platform 400 x 900 x 400 mm.



PANH-WTRAY
Tray for condenser water compatible with base ground support



PANH-GRDSE20
Outdoor base ground support for noise and vibration absorption (600 x 95 x 130 mm, 500 kg)



PANH-WPH7: Wind protection shield for U-50PE1E5, U-71PE1E5R, U-100PE1E5R, U-125PE1E5R.
PANH-WPH8: Wind protection shield for U-200PE1E8, U-250PE1E8.
PANH-WPH9: Wind protection shield for U-60PE1E5, U-71PE1E5R, U-100PE1E5R, U-125PE1E5R.
PANH-WPH10: Wind protection shield for U-100PE1E5R, U-125PE1E5R, U-140PE1E5R, U-140PE1E8.



PANH-PACR3
Interfaces to run 3 units on Backup and alternative run.



U-60PE1E5
U-71PE1E5
U-50PE1E5



U-100PE1E5
U-125PE1E5
U-100PE1E8
U-100PE1E8
U-125PE1E8



U-60PE1E5A
U-71PE1E5A
U-100PE1E8A
U-140PE1E8
U-100PE1E8A
U-140PE1E8A